



Seadance, Tuula Falk

PRISLISTA 2024

**borås cotton contract**

ART ON FABRIC

# borås cotton contract

Välkommen till 2024 års kollektion med Borås Cotton Contract

I år kommer TEIDE och SALLA att kompletteras med en ny spännande Topp FUJI.

FUJI en ny 3 meter bred enfärgad kvalitet tillverkad av 100% återvunnen flamskyddad polyester GRS.

Den kommer inledningsvis i 6 färger som självklart harmonierar med vårt övriga sortiment av flamskyddade tyger.

Vi håller på att utveckla flerspännande kvaliteteter som kommer att lanseras under året.

Det känns som fler vågar färg och mönster.

När Hanna Werning satte nya färger på sitt bomullstryck VILDTRIPPA och vi tryckte det på TEIDE i 300 cm bredd tog det fart. Att färgerna i Vildtrippa harmonierar med AKKA, ELBRUS och TEIDE gör det lättare att våga sätta upp en mönstrad gardin.

Den fantastiska utställningen MÄSTARE i MÖNSTER som visats på KULTUREN i LUND från 29 mars till 28 januari var en stor succé. Denna vandringsutställning har nästa anhalt i Ystad efter sommaren.

Våga färg! Våga mönster!



Jonas Unenge  
Borås Cotton Contract

---

## INNEHÅLL

FR FLAMSÄKER

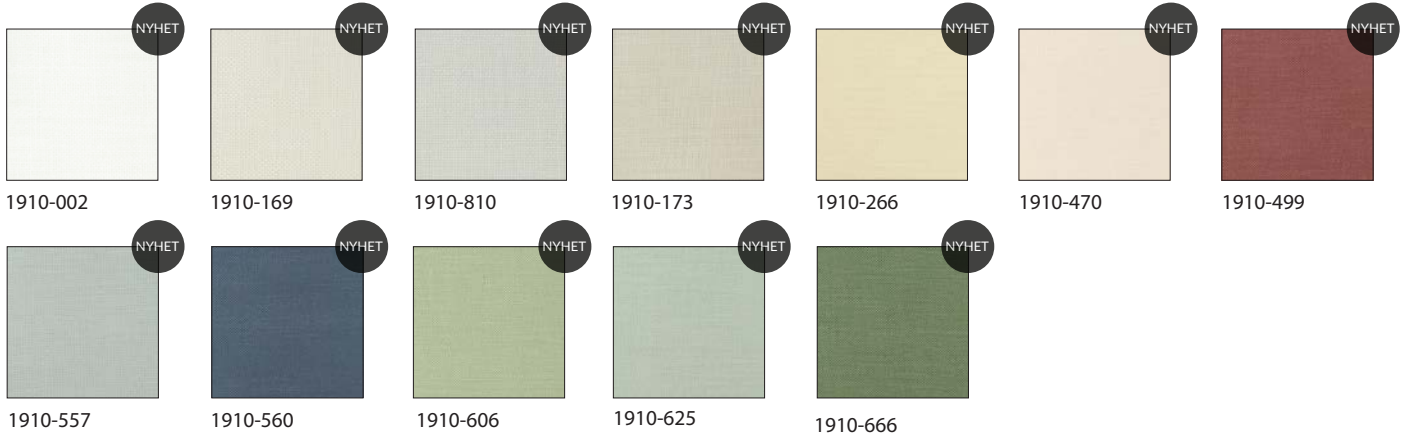
3 - 11

# FR FLAMSÄKER

## TEIDE FR Flamsäker



3 METER

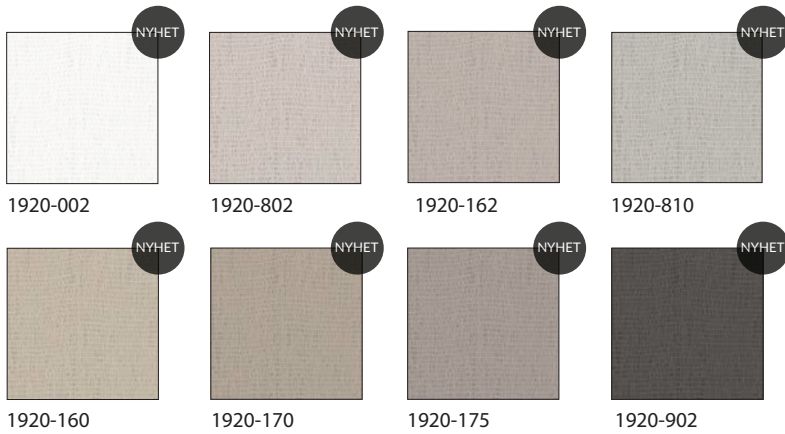


RAPPORT	BREDD CM	SEK/M KUPONG	VIKT
-	300	466	170 g/m <sup>2</sup>

## SALLA FR Flamsäker



3 METER

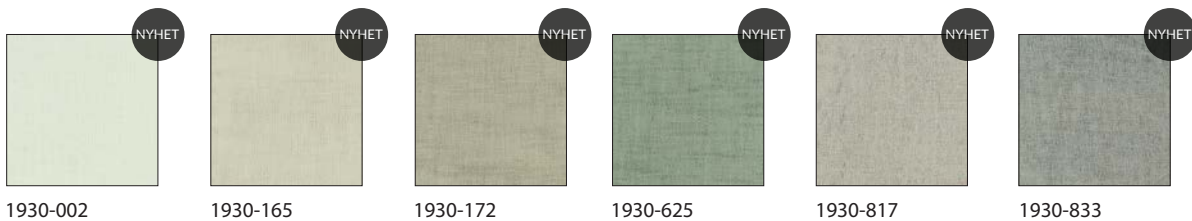


RAPPORT	BREDD CM	SEK/M KUPONG	VIKT
-	300	357	93 g/m <sup>2</sup>

## FUJI FR Flamsäker



3 METER



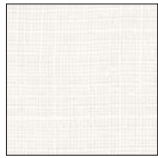
RAPPORT	BREDD CM	SEK/M KUPONG	VIKT
-	300	510	150 g/m <sup>2</sup>

# FR FLAMSÄKER

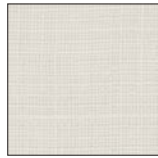
## AKKA FR Flamsäker



3 METER



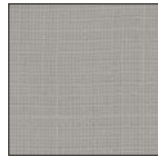
1400-001



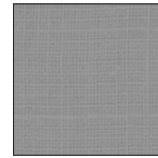
1400-002



1400-167



1400-805



1400-820



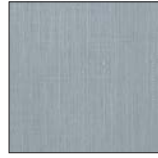
1400-265



1400-475



1400-495



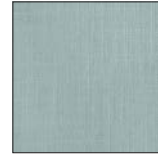
1400-533



1400-560



1400-577



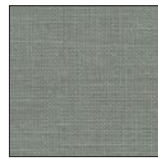
1400-601



1400-603



1400-620



1400-625



1400-650

RAPPORT

BREDD CM

SEK/M KUPONG

VIKT

-

300

250

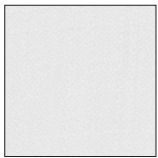
105 g/m<sup>2</sup>

## ELBRUS FR Flamsäker



3 METER

No Noise



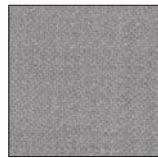
1300-001



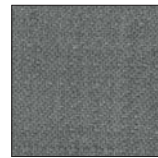
1300-002



1300-165



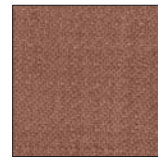
1300-820



1300-835



1300-475



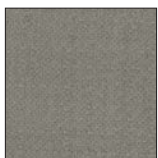
1300-495



1300-560



1300-625



1300-650



1300-603



1300-901



1300-264

NYHET



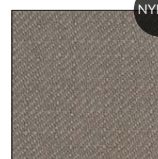
1300-173

NYHET



1300-176

NYHET



1300-179

NYHET

RAPPORT

BREDD CM

SEK/M KUPONG

VIKT

-

300

484

280 g/m<sup>2</sup>

## BILLINGEN FR Flamsäker



3 METER



1900-002

NYHET

RAPPORT

BREDD CM

SEK/M KUPONG

VIKT

-

300

242

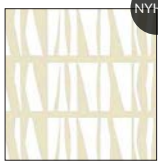
90 g/m<sup>2</sup>

## FR FLAMSÄKER

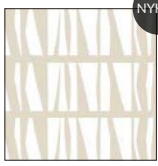
### LEIA SMALL FR Flamsäker Design: Tuula Falk



3 METER



1655-266



1655-175

RAPPORT	BREDD CM	SEK/M KUPONG	VIKT
ca 76	300	778	170 g/m <sup>2</sup>

### SEADANCE FR Flamsäker Design: Tuula Falk



3 METER



1650-560



1650-175

RAPPORT	BREDD CM	SEK/M KUPONG	VIKT
ca 102	300	778	170 g/m <sup>2</sup>

### VILDTRIPPA FR Flamsäker Design: Hanna Werning



3 METER



1660-721



1660-723



1660-725

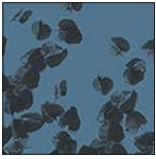
RAPPORT	BREDD CM	SEK/M KUPONG	VIKT
ca 65	300	778	170 g/m <sup>2</sup>

## FR FLAMSÄKER

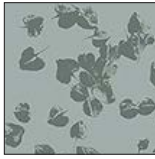
SINGLANDE BLAD STOR FR Flamsäker  
Design: Kiki Plesner-Löfroth / Plesner Patterns



3 METER



1816-560



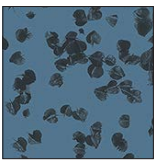
1816-625

RAPPORT	BREDD CM	SEK/M KUPONG	VIKT
-	300	700	90 g/m <sup>2</sup>

SINGLANDE BLAD SMÅ FR Flamsäker  
Design: Kiki Plesner-Löfroth / Plesner Patterns



3 METER



1815-560



1815-625

RAPPORT	BREDD CM	SEK/M KUPONG	VIKT
-	300	700	90 g/m <sup>2</sup>

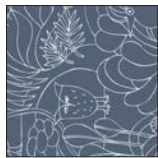
TWITTERS 2 FR Flamsäker  
Design: Lisa Larson



3 METER



1805-475



1805-560



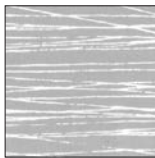
1805-603

RAPPORT	BREDD CM	SEK/M KUPONG	VIKT
ca 64	300	700	90 g/m <sup>2</sup>

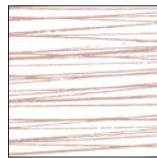
JAPAN FR Flamsäker  
Design: Göta Trägårdh



1110-820



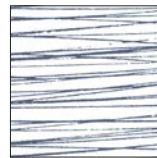
1110-821



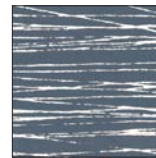
1110-475



1110-476



1110-560



1110-561



1110-625



1110-626

RAPPORT	BREDD CM	SEK/M KUPONG	VIKT
ca 62	140	466	90 g/m <sup>2</sup>

## FR FLAMSÄKER

HAPPY LEAVES FR Flamsäker  
Design: Sven Fristedt



3 METER



1830-745



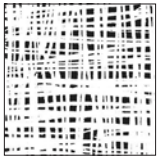
1830-755

RAPPORT	BREDD CM	SEK/M KUPONG	VIKT
ca 48	300	700	90 g/m <sup>2</sup>

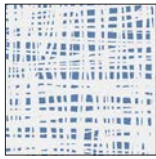
MIKA FR Flamsäker  
Design: Aoi Yoshizawa



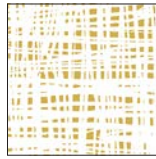
3 METER



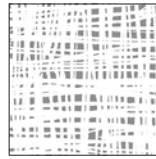
1801-902



1801-540



1801-255



1801-820



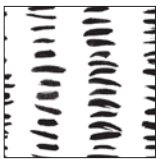
1801-167

RAPPORT	BREDD CM	SEK/M KUPONG	VIKT
ca 64	300	700	90 g/m <sup>2</sup>

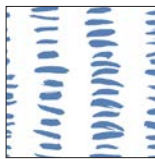
STRIMMA Flamsäker  
Design: Essy Winnerholt



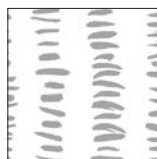
3 METER



1210-902



1210-535



1210-810

RAPPORT	BREDD CM	SEK/M KUPONG	VIKT
ca 42	300	700	90 g/m <sup>2</sup>

EKLÖV FR Flamsäker  
Design: Lena Boije



3 METER



1109-713 / 1809-713

RAPPORT	BREDD CM	SEK/M KUPONG	VIKT
ca 64	150/300	466/700	90 g/m <sup>2</sup>

GRAMINA FR Flamsäker  
Design: Lena Boije



3 METER

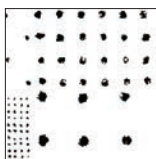


1808-600

RAPPORT	BREDD CM	SEK/M KUPONG	VIKT
ca 64	300	700	90 g/m <sup>2</sup>

# FR FLAMSÄKER

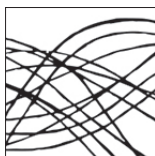
NOPPE FR Flamsäker  
Design: Sven Fristedt



1101-900

RAPPORT	BREDD CM	SEK/M KUPONG	VIKT
ca 64	140	466	75 g/m <sup>2</sup>

RAPID FR Flamsäker  
Design: Göta Trägårdh



1105-901

1105-900

RAPPORT	BREDD CM	SEK/M KUPONG	VIKT
ca 102	140	466	90 g/m <sup>2</sup>

COSMOS FR Flamsäker  
Design: Göta Trägårdh



1106-701

RAPPORT	BREDD CM	SEK/M KUPONG	VIKT
ca 64	140	466	90g/m <sup>2</sup>

MAXI X FR Flamsäker  
Design: Sven Fristedt



1107-901

RAPPORT	BREDD CM	SEK/M KUPONG	VIKT
ca 102	140	466	75 g/m <sup>2</sup>



## FR FLAMSÄKER

LAGER FR Flamsäker (Trevira CS)  
Design: Sven Fristedt



1103-001

RAPPORT	BREDD CM	SEK/M KUPONG	VIKT
ca 41	140	466	75 g/m <sup>2</sup>

GLADA BLAD FR Flamsäker (Trevira CS)  
Design: Sven Fristedt



1102-452



1102-662



1102-262



1102-001

RAPPORT	BREDD CM	SEK/M KUPONG	VIKT
ca 64	140	466	75 g/m <sup>2</sup>

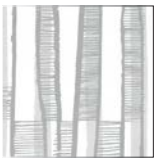
MITT ZOO FR Flamsäker (Trevira CS)  
Design: Sven Fristedt



1104-001

RAPPORT	BREDD CM	SEK/M KUPONG	VIKT
ca 66	140	466	75 g/m <sup>2</sup>

LEJDAREN FR Flamsäker (Trevira CS)  
Design: Essy Winnerholt



1500-810



1500-675

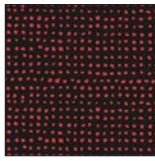
RAPPORT	BREDD CM	SEK/M KUPONG	VIKT
ca 102	140	513	170 g/m <sup>2</sup>

# FR FLAMSÄKER

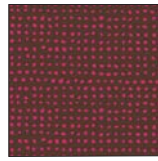
LOPPAN FR Flamsäker (Trevira CS)  
Design: Sven Fristedt



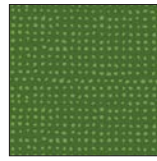
1100-901



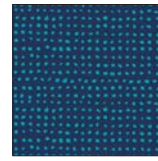
1100-905



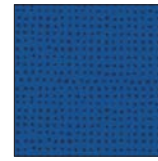
1100-185



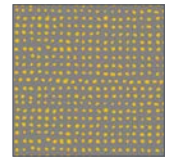
1100-665



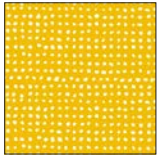
1100-575



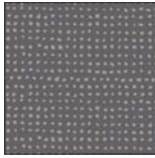
1100-555



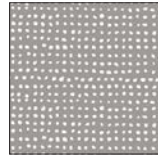
1100-835



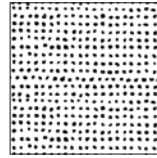
1100-261



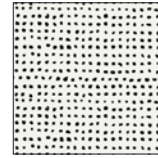
1100-845



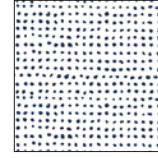
1100-821



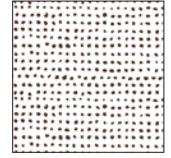
1100-900



1100-902



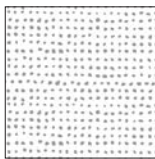
1100-570



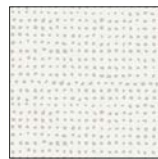
1100-180



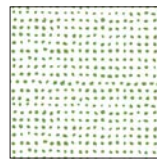
1100-100



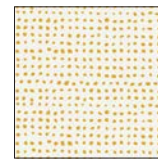
1100-820



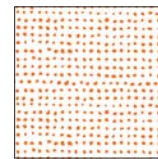
1100-102



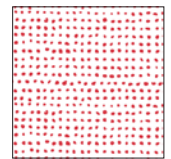
1100-640



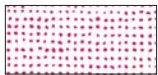
1100-260



1100-360



1100-450



1100-490

RAPPORT	BREDD CM	SEK/M KUPONG	VIKT
ca 64	140	466	75 g/m <sup>2</sup>

MATTERHORN FR Flamsäker (Trevira CS)

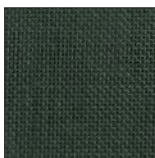


3 METER

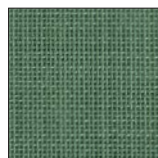
Bredd 150 cm utgår, färger kan försvinna under året



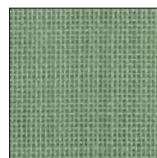
1200-180



1200-675



1200-615



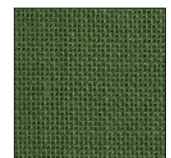
1200-610



1200-605



1200-670



1200-660



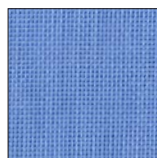
1200-630



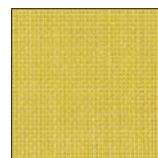
1200-625



1200-540



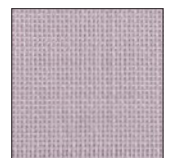
1200-530



1200-255



1200-480



1200-485



1200-810



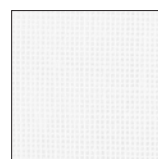
1200-170



1200-600



1200-160



1200-100



1200-001

RAPPORT	BREDD CM	SEK/M KUPONG	VIKT
-	150/300	279/590	105 g/m <sup>2</sup>

## FR FLAMSÄKER

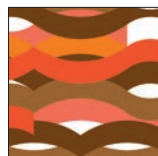
OCEAN FR Flamsäker  
Design: Carl Johan Hane



1600-562



1600-662



1600-452



1600-815

RAPPORT

BREDD CM

SEK/M KUPONG

VIKT

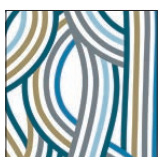
ca 95

140

513

200 g/m<sup>2</sup>

FLOW FR Flamsäker  
Design: Carl Johan Hane



1601-562



1601-662



1601-452



1601-822

RAPPORT

BREDD CM

SEK/M KUPONG

VIKT

ca 95

140

513

200 g/m<sup>2</sup>

FOCUS FR Flamsäker  
Design: Carl Johan Hane



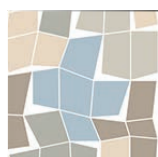
1602-562



1602-662



1602-452



1602-822

RAPPORT

BREDD CM

SEK/M KUPONG

VIKT

ca 95

140

513

200 g/m<sup>2</sup>